

Annex

Tables

Table A.1 OLS-regression analysis of the determinants of the pre-displacement wages on the basis of the survey and register data

	Dependent variable: pre-displacement wage (in CHF)	
	Survey data	Register data
Age (ref. < 30)		
30–34	1119 (898)	1108 (639)*
35–39	1180 (929)	1141 (662)*
40–44	1395 (824)*	1563 (587)***
45–49	2121 (739)***	1957 (526)***
50–54	1578 (734)**	1475 (523)***
55–59	1857 (746)**	2180 (531)***
>59	1956 (754)**	1751 (537)***
Sex (ref. women)		
Men	1562 (376)***	1645 (268)***
Nationality (ref. Swiss)		
France, Germany, Italy and Austria	697 (715)	734 (509)
Spain and Portugal	–560 (727)	–64 (517)
Non-EU countries	–683 (716)	–445 (509)
Education (ref. less than upper secondary education)		
Upper secondary education	450 (622)	428 (442)
Tertiary education	2532 (675)***	2073 (480)***
Constant	1301 (1081)	1145 (770)
Adjusted R2	0.26	0.38
N	157	157

Note: * $p < 0.1$, ** $p < 0.05$, *** $p < 0.01$

Table A.2 Coefficients for a bivariate probit model with Heckman selection correction on the probability of being employed in the service sector as compared to manufacturing, conditional on being reemployed

	Outcome equation on being reemployed in services (as compared to being reemployed in manufacturing)		Selection equation on being reemployed (as compared to being unemployed or out of the labor force)	
	Coef.	(SE)	Coef.	(SE)
Sex (ref. woman)	-0.37**	(0.17)		
Men				
Education (ref. less than upper secondary)				
Upper secondary	0.09	(0.15)	0.59***	(0.14)
Tertiary	0.07	(0.20)	0.85***	(0.16)
Tenure (ref. < 2 years)				
2–5 years	0.10	(0.12)	0.66***	(0.22)
6–10 years	0.16	(0.13)	0.32***	(0.12)
11–20 years	0.28	(0.27)	0.08	(0.23)
>20 years	-0.16	(0.15)	-0.06	(0.28)
Occupation (ref. white-collar)				
Blue-collar	-0.04	(0.08)		
Unemployment duration (ref. < 3 months)				
3–6 months	0.26	(0.20)		
7–12 months	0.22	(0.16)		
13–24 months	0.31**	(0.14)		
Age in years (ref. < 30)				
30–39			0.32	(0.22)
40–49			0.25	(0.20)
50–54			0.01	(0.41)
55–59			-0.86***	(0.27)
>59			-2.26***	(0.23)
Plant (ref. Plant 1 (Geneva))				
Plant 2 (Biel)	-0.58***	(0.31)	1.12***	(0.07)
Plant 3 (NWS 1)	-0.89***	(0.44)	1.00***	(0.11)
Plant 4 (Bern)	-0.83***	(0.59)	0.62***	(0.04)
Plant 5 (NWS 2)	-1.12***	(0.31)	1.26***	(0.11)
Civil status (ref. married)				
Single			-0.24**	(0.09)
District unemployment rate	-0.03			
Constant	-0.06	(0.14)	-0.54	(0.41)
Rho			0.26	(0.16)

Note: The outcome equation contains the same variables as Fig. 6.2

N observations: 658; censored observations: 220

Standard errors are clustered at the plant level. Significance levels: * $p < 0.1$, ** $p < 0.05$, *** $p < 0.01$

The Wald test is not significant ($p = 0.12$)

Figures

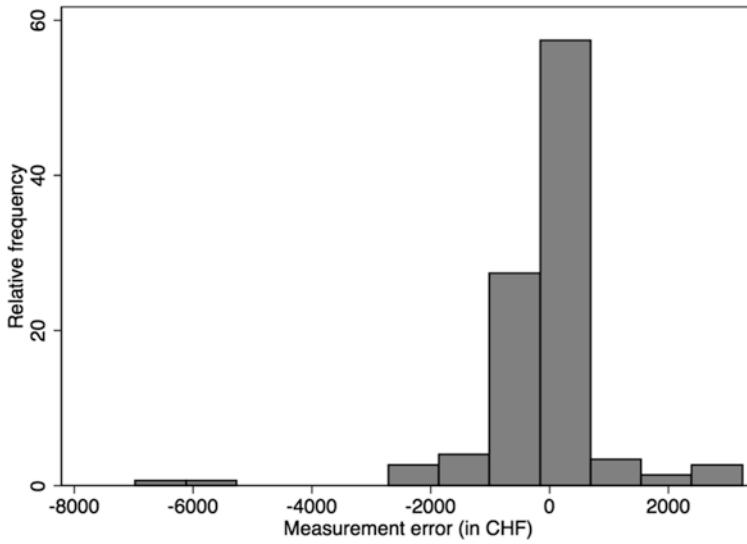


Fig. A.1 Relative frequency of the measurement error for pre-displacement wages. N=150

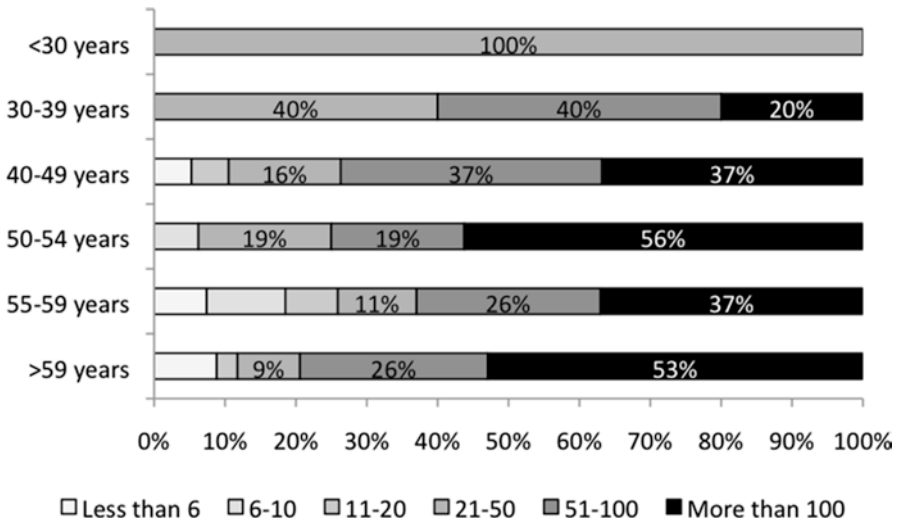


Fig. A.2 Number of job applications for the still or again unemployed workers by age category. N=102

References

- Arni, P. (2010). *How to improve labor market programs for older job-seekers? A field experiment* (pp. 1–49).
- Autor, D. H., Dorn, D., Hanson, G. H., & Song, J. (2013). *Trade adjustment: Worker level evidence* (NBER working paper no. 19226). Cambridge, MA: National Bureau of Economic Research (NBER working paper no.
- Brooke, L., & Taylor, P. (2005). Older workers and employment: Managing age relations. *Ageing and Society*, 25(3), 415–429.
- Bundesamt für Statistik. (2007). *Participation à la formation continue en Suisse*. Swiss Federal Statistical Office.
- Charness, G., & Marie-Claire, V. (2007). *Cooperation, competition, and risk attitudes: An inter-generational field and laboratory experiment*. Institute for the Study of Labor (IZA) Discussion Paper Series, No. 2674. Bonn: IZA.
- Dieckhoff, M. (2007). Does it work? The effect of continuing training on labour market outcomes: A comparative study of Germany, Denmark and the United Kingdom. *European Sociological Review*, 23(3), 295–308.
- Egger, M., Moser, R., & Thom, N. (2008). *Arbeitsfähigkeit und Integration der älteren Arbeitskräfte in der Schweiz – Studie I* (SECO Publikation Arbeitsmarktpolitik, No. 24). Bern: SECO
- Eurofound. (2013). *Role of governments and social partners in keeping older workers in the labour market*. Dublin: Eurofound.
- Gallie, D. (2003). The quality of working life: Is Scandinavia different? *European Sociological Review*, 19(1), 61–79.
- Göbel, C., & Zwick, T. (2013). Are personnel measures effective in increasing productivity of old workers? *Labour Economics*, 22, 80–93.
- Mahlberg, B., Freund, I., Crespo Cuaresma, J., & Prskawetz, A. (2013). Ageing, productivity and wages in Austria. *Labour Economics*, 22(100), 5–15.
- Meyer, J. (2011). Workforce age and technology adoption in small and medium-sized service firms. *Small Business Economics*, 37(3), 305–324.
- OECD. (2009). Employment outlook: How do industry, firm and worker characteristics shape job and worker flows? In *OECD employment outlook* (pp. 117–163). Paris: OECD.
- OECD. (2014). *Schweiz. Bessere Arbeit im Alter*. Paris: OECD Publishing.
- Pries, M. J. (2004). Persistence of employment fluctuations: A model of recurring job loss. *Review of Economic Studies*, 71(1), 193–215.
- Romeu Gordo, L., & Skirbekk, V. (2013). Skill demand and the comparative advantage of age: Jobs tasks and earnings from the 1980s to the 2000s in Germany. *Labour Economics*, 22, 61–69.

- Stevens, A. H. (1997). Persistent effects of job displacement: The importance of multiple job losses. *Journal of Labor Economics*, 15(1), 165–188.
- Van Ours, J. C. (2010). Will you still need me: When I'm 64? *De Economist*, 157(4), 441–460.

Open Access This chapter is licensed under the terms of the Creative Commons Attribution-NonCommercial 4.0 International License (<http://creativecommons.org/licenses/by-nc/4.0/>), which permits any noncommercial use, sharing, adaptation, distribution and reproduction in any medium or format, as long as you give appropriate credit to the original author(s) and the source, provide a link to the Creative Commons license and indicate if changes were made.

The images or other third party material in this chapter are included in the chapter's Creative Commons license, unless indicated otherwise in a credit line to the material. If material is not included in the chapter's Creative Commons license and your intended use is not permitted by statutory regulation or exceeds the permitted use, you will need to obtain permission directly from the copyright holder.



Index

A

Antonakis, J., 41
Apprenticeship, 26, 54, 66, 70, 72
Autor, D., 4

B

Becker, G.S., 14, 127, 143
Bias
 nonresponse bias, 40, 43, 47, 48
 selection bias, 35–36, 137, 153, 163
 survey bias, 35, 40–42, 58
Blue-collar worker, 70, 76, 104, 112, 114, 116, 137
Bonoli, G., 7, 8, 10, 93, 109
Brand, J.E., 1, 3, 17, 20–22, 35, 53, 54, 143, 151, 165, 166, 172
Breen, R., 77
Burda, M.C., 2, 54, 131
Burgard, S.A., 165, 173

C

Career, 1–11, 13, 15, 16, 23, 72, 76, 78, 89, 91, 97, 127, 140, 143, 144, 149, 155, 172, 173, 175
Clark, A.E., 21–23, 147, 153, 157, 165
Clerks, 4, 13, 46, 47, 70, 104, 110, 114, 119–121, 124
Commuting, 9, 22, 95–97, 104, 165, 170
Constraints, 8, 18, 83
Contract
 fixed-term contract, 144, 146
 permanent contract, 16, 144, 151, 155
 temporary contract, 16, 97, 144, 146

Control group, 2, 35, 44, 52–53, 63, 67, 78, 128, 130, 131, 140
Coping, 18–19, 24, 157–161, 174
Couch, K.A., 2, 6, 14, 15, 77
Craft workers, 46–48, 70, 88, 114, 118–121, 124
Critical event, 18, 157, 161, 175

D

Deferred compensation, 6, 15
Deindustrialization, 57, 109
Dieckhoff, M., 16, 17, 22, 56, 101, 143, 151, 166
Discrimination, 7
Displacement, 26, 36, 39, 44–47, 50–53, 55, 64–69, 71, 76–78, 81, 83, 87–89, 91, 95, 98, 99, 110, 117, 118
Dorn, D., 4, 10, 89
Downgrading
 occupation downgrading, 25, 109, 114, 119, 121, 125
 social downgrading, 26, 91
Downturn, 132, 134
Duration dependence, 3, 99

E

Economic boom, 2
Elder, G., 18, 157
Eliason, M., 2, 7, 18, 20, 36, 77, 161, 163, 166
Employability, 3, 9, 97
Employer, 2–5, 7, 8, 11, 12, 14, 24, 26, 36, 38, 42, 45, 56, 63, 65, 76, 85, 96, 99, 105, 110, 112, 117, 125, 127, 134, 141, 149

F

Fallick, B.C., 2–4, 12, 52, 78
 Farber, H.S., 5, 11, 44, 76, 78, 97, 132
 Financial crisis, 57
 Flückiger, Y., 3, 5, 22, 57

G

Gallie, D., 16, 18–20, 91, 161, 163
 Gebel, M., 3, 96, 99
 Geneva, 37, 40, 47, 57, 69, 71, 74, 82, 85, 101,
 105, 114, 117, 123, 146, 170

H

Hamermesh, D.S., 1, 3, 78
 Hiring, 7, 8, 15, 65, 76, 141
 Household, 18, 20–24, 42, 53, 157–159, 162
 Human capital theory, 3, 12, 14, 127, 139, 143

I

Inequality, 129
 Institution, 10, 24, 43, 55, 56, 75, 76, 86

J

Jacobsen, L.S., 2
 Jahoda, M., 21
 Job, 91, 92
 authority, 16, 17, 143, 149–152, 154, 155,
 165, 170
 quality, 16–17, 22, 25, 26, 91, 104, 121,
 125, 143–155
 satisfaction, 22, 125, 143, 149, 151–154
 search
 formal job search, 92
 information job search, 92
 job search intensity, 91
 security, 16, 23, 143, 146–148, 151, 155
 Jolkkonen, A., 5, 6, 44, 54, 65, 76, 78, 98, 134
 Joye, D., 41, 48, 163

K

Kahneman, D., 9, 22, 95, 135, 166
 Kalleberg, A., 16, 23, 91, 143, 158, 165
 Kletzer, L., 2, 7, 15, 44, 64, 65, 76, 78, 132
 Kuhn, P.J., 3, 65

L

Laganà, F., 41
 Lalive, R., 10
 Life course, 68, 153

Life satisfaction, 21–23, 25, 54, 77, 87, 154,
 157, 165, 166, 168–173, 175
 Linked lives, 157–176
 Lipps, O., 21, 41, 165, 166
 Longitudinal data, 2, 3, 8, 9, 11, 17, 18, 21,
 22, 42, 54, 77, 115, 157, 165, 173
 Low-skilled workers, 4

M

Machine operators, 4, 46, 47, 70, 88, 101, 114,
 118–121, 124
 Macroeconomic, 8, 101
 Managers, 16, 23, 45, 46, 48, 70, 93, 110, 114,
 119–121, 124, 172
 Measurement error, 40–42, 50, 51, 58, 119, 128
 Mertens, A., 2, 54, 132
 Motivation, 3, 4, 8, 35, 44, 99, 143

N

North-Western Switzerland, 38, 39, 86, 101, 123

O

Occupations/occupational
 change, 5, 13, 110, 118, 119, 122–125
 elementary, 46, 47, 70, 88, 101, 114,
 119–121
 manufacturing, 119
 mobility, 118
 trajectory, 1
 transition, 1, 24–26, 55, 56, 90, 109, 119,
 127, 140, 151, 175
 upgrading, 5
 service, 13
 OECD, 3, 4, 10, 12, 13, 16, 55, 68, 76, 97,
 109, 115, 130, 132, 144, 158
 Oesch, D., 5, 8, 13, 15, 21, 36, 65, 119, 165,
 166
 Older workers, 5, 6, 10, 12, 13, 15, 17, 25,
 26, 38, 57, 63, 70, 75–78, 81–83,
 86, 88, 89, 97, 99, 101, 127, 140,
 149, 173

P

Polarization, 4, 5, 18, 161, 175
 Policy
 active labor market policy (ALMP), 105
 policy decision, 89
 Productivity, 3, 4, 15, 65, 77, 127, 134, 136
 Professionals, 13, 16, 46–48, 56, 70, 93, 104,
 114, 119–121, 124
 Propensity score matching, 53, 54, 67, 129

R

- Recession, 7, 132
 Redundancy plan, 38, 39, 47, 55, 74, 77, 83–86, 89
 Reemployment, 1, 2, 4–10, 12, 14, 16, 23, 25, 26, 35, 38, 44, 47, 52, 63–68, 70–72, 74–78, 81, 83, 86, 88, 90, 91, 96, 99, 101, 105, 109–112, 114, 116–119, 121, 124, 127, 134, 135, 139, 140, 143, 144, 149, 155, 165, 172, 173
 Relationship
 couple, 172
 family, 164, 168, 172
 social, 19, 23, 25, 26, 157, 162–164, 168, 173, 175
 Resources, 14, 47, 86
 Retirement
 early, 10, 25, 38, 39, 52, 55, 64, 68, 70, 71, 77, 81–90
 regular, 38, 39, 77, 83, 86
 Ruhm, C.J., 2, 15

S

- Sampling, 35, 37, 53, 54
 Scarring, 26, 165
 Sectors, 111, 116, 117
 industrial, 109
 manufacturing, 4, 12, 37, 54, 58, 66, 68, 78, 98, 109, 110, 113, 116, 117, 124, 137, 139
 secondary, 111
 service
 business services, 111, 116, 117
 distributive and consumer services, 116, 117
 social and public services, 116, 117
 tertiary, 111, 114, 117, 139
 Signaling theory, 3, 4, 127, 139
 Skills
 firm-specific, 15, 56, 63, 65, 136, 137
 industry-specific, 56, 66
 sector-specific, 110, 137
 skill biased technological change (SBTC), 4
 skill mismatch, 14, 17, 93, 104
 skill regime, 24, 55, 56, 137
 social, 8, 35, 110
 transferable, 109, 125
 Sociability, 1, 19, 25, 161–163, 175
 Spence, M., 3
 Spitz-Oener, A., 13
 Storrie, D., 2, 7, 36, 77, 166

Swiss State Secretariat of Economic Affairs (SECO), 43, 97

T

- Technicians, 46, 47, 70, 93, 114, 118, 120, 121, 124
 Tenure, 6, 12–15, 24, 25, 38, 39, 63, 65, 71, 72, 85, 86, 101, 110, 112, 116, 117, 122, 129–132, 136, 139, 143, 146
 Termination pay, 38, 39, 55, 74
 Trade union, 38, 39, 56, 93
 Training
 continuous, 76
 vocational, 14, 26, 56, 66, 77, 101, 109, 112, 137
 Transferability, 12, 25, 127
 Transition, 1, 10, 12, 24, 55, 56, 78, 81, 86, 90, 91, 96, 101, 109, 119, 127, 140, 151, 175

U

- Unemployment
 benefits, 18, 37, 38, 45, 55, 57, 64, 66, 74, 77, 83, 85, 91, 95, 97, 129, 132, 147, 168, 175
 long-term, 11, 16, 18, 25, 26, 37, 78, 81, 90, 114, 124, 143, 149, 164

V

- Vulnerability/vulnerable, 11, 16, 20, 76, 78, 143, 175

W

- Wages
 wage loss, 2, 12, 14, 16, 22, 26, 52, 93, 96, 110, 127, 130–132, 134, 136, 137, 139, 140, 144, 158, 159, 165, 166
 Weder, R., 2, 6, 44, 64, 134
 Well-being
 subjective, 1, 21–24, 26, 54, 87, 157, 165–168, 173, 176
 White-collar worker, 70, 77, 104, 110, 112–114, 116, 137, 143
 Works council, 37, 40, 47
 Wyss, S., 2, 5, 6, 44, 64, 76, 98, 101, 134, 144

Y

- Young, C., 3, 22, 165